

Northern Arizona GIS Users Coalition meeting spring 2020 in Kingman, AZ

On Thursday March 26, 2020 starting at **10:30 AM to 1:30 PM** (working lunch) at Mohave County Public Works meeting room at [3715 Sunshine Dr, Kingman, AZ 86409](#). Optional, if you want to provide money for purchasing pizza is requested. This meeting room seats up to 40 people therefore please make sure to RSVP to ensure your seat and for in-person please indicate your lunch option. Or join on your own computer via WebEx, details to join on-line are below.

Either joining in person or online, please RSVP for this meeting (Google form):

<https://forms.gle/koQNe5nLvsL655uPA>

NAGIS Webex meeting information.

When it's time, join the Webex meeting here -

<https://azgov.webex.com/azgov/j.php?MTID=m18033871d27d318adfb5ffb20ba599e5>

Meeting number (access code): 805 246 267

Meeting password: APh83Y7ZmrD

Thursday, March 26, 2020 for 3 Hours working through lunch

Join by phone

[+1-602-666-0783](tel:+16026660783) United States Toll (Phoenix)

[+1-415-655-0003](tel:+14156550003) US Toll

[Global call-in numbers](#)

Join from a video system or application

Dial [805246267](tel:805246267) @ azgov.webex.com

You can also dial 173.243.2.68 and enter your meeting number.

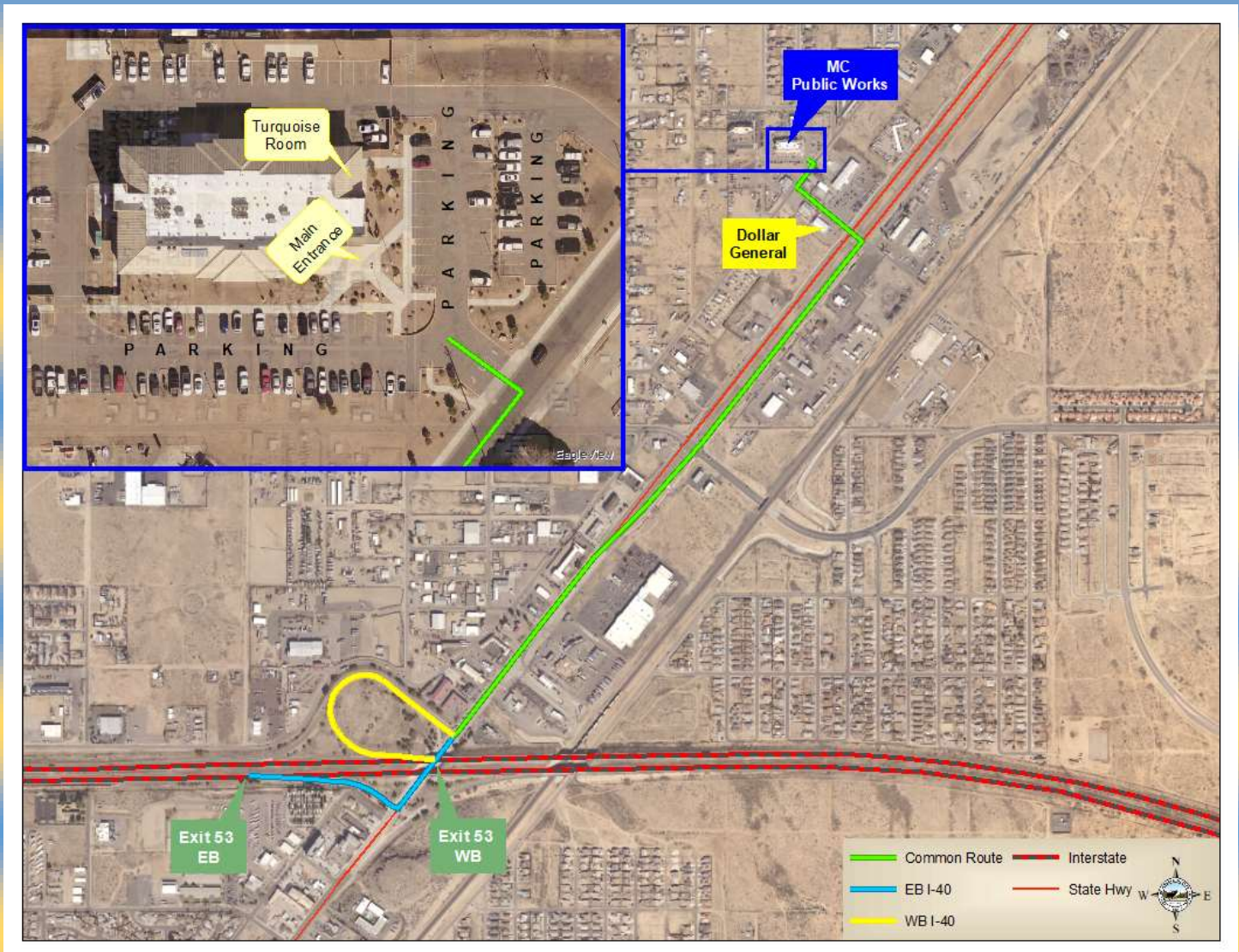
Join using Microsoft Lync or Microsoft Skype for Business

Dial [805246267](tel:805246267) . azgov@lync.webex.com

Meeting Agenda (not in any specific order)

- Mohave County Public Works Collector Application for Culverts, Cattleguards, Hydrants
- AGIC announcements - Outreach Committee
- NSGIS mid-year summary
- 2020 US Census announcement, brief discussion about Differential Privacy
- ESRI Denver - ArcGIS Pro - balance of tips and tricks for using Pro more efficiently and “what’s new” in Pro

For those attending in person, see map below, best if you park in the highlighted area. When you walk into the main entrance of the building, the conference room is down the short hallway to your left.



When coming in on I-40 (From either direction) take the Andy Devine exit, and turn left onto Andy Devine Avenue. Proceed through the light at Airway Ave. and take a left at Horizon Blvd (at the Dollar General). Turn right onto Sunshine Dr. and take an immediate left into the Public Works parking lot.